



GUIDE PRICE

£425,000

Darenth Gardens

Westerham, TN16 1DD

PROPERTY SUMMARY

Guide price £425,000 - £450,000 Situated in the sought after 'Market Fields development', this three bedroom family home has been much improved by the current owners and is superbly located for both King George's playing fields and the High Street, with its eclectic mix of boutique, eateries and day-to-day amenities. The property benefits from gas central heating, double glazing and a south facing garden and is tastefully re-decorated throughout. The property is within the catchment of Churchill (outstanding ofsted) primary school.

3



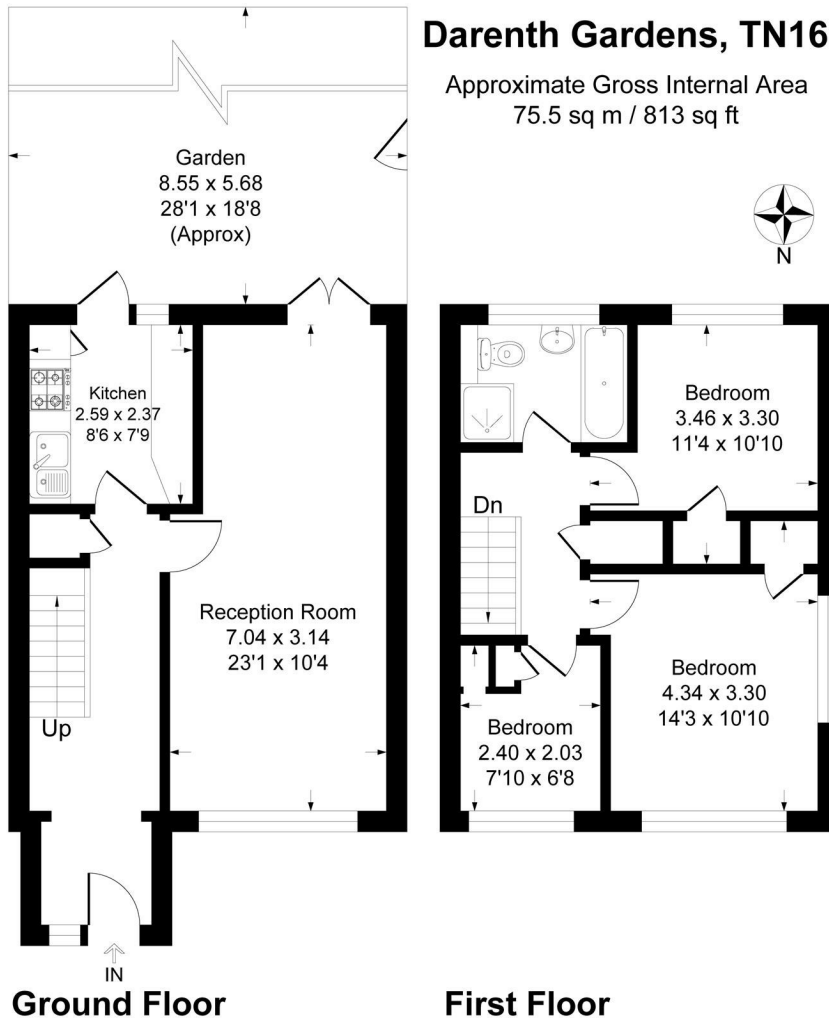
1



1







This plan is for layout guidance only. Not drawn to scale unless stated. Windows and door openings are approximate. Whilst every care is taken in the preparation of this plan, please check all dimensions, shapes and compass bearings before making any decisions reliant upon them.
Produced By Planpix



LOCAL AUTHORITY

TENURE

Freehold

EPC RATING

C

COUNCIL TAX BAND

D

VIEWINGS

By prior appointment only

Energy Efficiency Rating		Current	Potential
<i>Very energy efficient - lower running costs</i>			
(92 plus) A			
(81-91) B			
(69-80) C			
(55-68) D			
(39-54) E			
(21-38) F			
(1-20) G			
<i>Not energy efficient - higher running costs</i>			
England & Wales		EU Directive 2002/91/EC	
		70	85

Agents Note: Whilst every care has been taken to prepare these particulars, they are for guidance purposes only. All measurements are approximate and are for general guidance purposes only and whilst every care has been taken to ensure their accuracy, they should not be relied upon and potential buyers/tenants are advised to recheck the measurements



OFFICE ADDRESS

1&2 The Grange
Westerham
Kent
TN16 7AH

OFFICE DETAILS

01959 587 460
infowh@sinclairhammelton